

#KM-051H BRAIN MODEL

This fully illustrated model features two cross sectional halves of the human brain mounted on two opposite sides of a vertical casing seated on a convex base. The anatomy and special features of the brain such as the Frontal Lobe, Parietal Lobe, Temporal Lobe, Occipital Lobe, Cerebellum, Brainstem, Pons, Medulla Oblongata, Thalamus and Hippocampus are conspicuously visible.

This model is mounted on a vertical panel which houses up to a maximum of 4 pullout cards providing supplementary information in connection with the brain or any disease condition. The dimensions of this model are 116(L) x 15(D) x 98(H)mm. The dimensions of the vertical panel are 160(L) x 17(D) x 170(H) mm. The dimensions of the base are 217(L) x 173(D) x 20(H)mm.

This model is an indispensable educational tool to be best used in brain surgeon, neurologist and doctor clinics, hospitals and medical schools for patients and students to understand the anatomy of the brain. The sectional view allows the patients to gain a better understanding of the areas in their brain where tumors might be present. The surgeon or doctor will be able to explain to the patient and their family how tumors in specific areas of the brain may affect motor skills, speech, sight and other functions and relevant surgical procedures to deal with it.

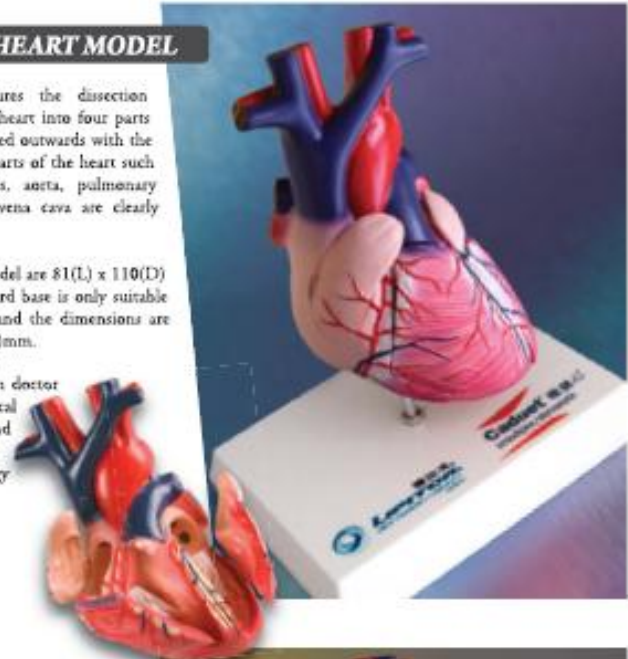


#KM-012S HEART MODEL

This Heart model features the dissection illustration of the human heart into four parts and each part can be opened outwards with the help of hinges. Different parts of the heart such as the atrium, ventricles, aorta, pulmonary artery/vein and superior vena cava are clearly illustrated in this model.

The dimensions of the model are 81(L) x 110(D) x 180(H) mm. The standard base is only suitable for the printing of logos and the dimensions are 182(L) x 142(D) x 26.5(H)mm.

This model is best used in doctor clinics, hospitals and medical schools for patients and students to understand the anatomy and physiology of the heart.



#KM-070 HEART MODEL

This Heart model features the dissection illustration of the human heart into four parts and each part can be opened outwards with the help of hinges. Different parts of the heart such as the atrium, ventricles, aorta, pulmonary artery/vein and superior vena cava are clearly illustrated in this model. The base provides a convenient space for the display of additional information sheet concerning faulty conditions of the heart or any drugs to treat such conditions.

The dimensions of the model are 81(L) x 110(D) x 180(H) mm. The sizes of the base are 217(L) x 173(D) x 20(H)mm. The maximum area for the display of the printed information sheet are 133(L) x 105(W)mm.

This model is best used in doctor clinics, hospitals and medical schools for patients and students to understand the anatomy and physiology of the heart.



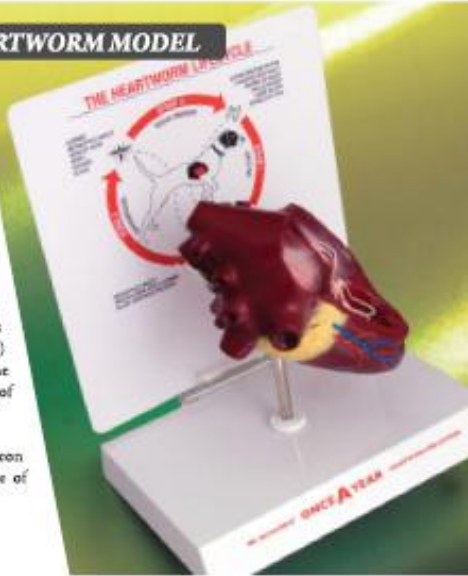
#KM-072

DOGS' HEARTWORM MODEL

This model features a cut away section of a dog's heart in which Heartworms are seriously infested in the ventricles. The parasitic roundworms spread from host to host through the bites of mosquitoes. Prevention of Heartworm infection can be obtained through effective drugs to be administered regularly.

A vertical display card (measuring 165(L) x 180(H)mm) at the back introduces the full life cycle of the Heartworm. The dimensions of the dog's heart are 89(L) x 126(D) x 68(H)mm and the model can be removed from the stand for viewing purpose. The dimensions of the base are 165 (L) x 128 (D) x 24 (H)mm.

This model is best used in veterinary surgeon clinics for the vets to explain the significance of the Heartworm to their clients.



#KM-068

KNEE JOINT MODEL

This full size, highly detailed Knee Joint model includes parts such as muscle, tendons, ligaments, femur, fibula, patella, tibia bones and vastus medialis muscles.

The dimensions of the model are 88.9(L) x 80(D) x 254 (H)mm. The base provides a convenient space for the display of additional information concerning the knee joint.

The sizes of the base are 217(L) x 173(D) x 20(H)mm. The maximum area for the display of the printed information sheet are 133(L) x 105(W)mm.

This informative model is best used in medical schools for students to learn about human anatomy, function and pathology. Other practical venues include doctor offices, orthopedics clinics and research pharmaceutical laboratories.



#KM-071

DOGS' HEARTWORM MODEL

This model features a cut away section of a dog's heart in which Heartworms are seriously infested in the ventricles. The parasitic roundworms spread from host to host through the bites of mosquitoes. Prevention of Heartworm infection can be obtained through effective drugs to be administered regularly.

A vertical display card (measuring 165(L) x 180(H) mm) at the back introduces the full life cycle of the Heartworm. The dimensions of the dog's heart are 89 (L) x 126(D) x 68(H)mm and the model can be removed from the stand for viewing purpose.

The base (with dimensions 217(L) x 173(D) x 20(H) mm) provides a convenient space for the display of supplementary information sheet in connection with this model. The maximum area for the display of the printed information sheet are 133(L) x 105(W)mm. Promotional material for the preventive drug can also be displayed on this base.

This model is best used in veterinary surgeon clinics for the vets to explain the significance of the Heartworm to their clients.



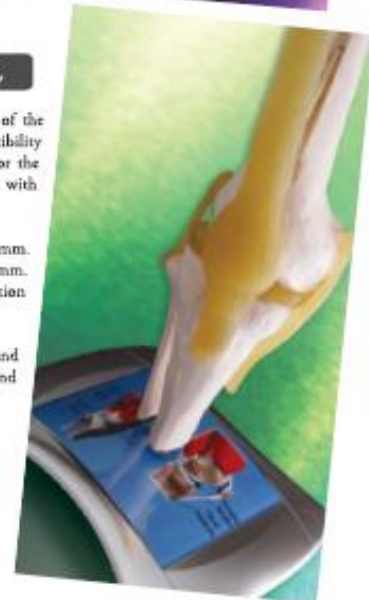
#KM-091

KNEE JOINT MODEL

This is a life-size model which demonstrates the function of the human Knee Joint in connection with the extension and flexibility of the ligaments. The base serves as a convenient space for the display of supplementary information sheet in connection with this model.

Dimensions of this model are 91(L) x 57(D) x 290(H)mm. Dimensions of the base are 217(L) x 173(D) x 20(H)mm. The maximum area for the display of the printed information sheet are 133(L) x 105(W)mm.

This model is best used in medical schools, hospitals and orthopedics clinics for students and patients to learn and understand the anatomy of the Knee Joint.



#KM-049A EAR MODEL

Ear model showing the outer, middle and inner ear and features such as the Auditory Ossicles, Labyrinth with Cochlea and Vestibulocochlear nerve. This model can be detached from the base for demonstration purpose. The base serves as a convenient space for the display of supplementary information in connection with this model.

The dimensions of the base are 217(L) x 173(D) x 20(H)mm. The maximum area for the display of the printed information sheet are 133(L) x 105(W)mm.

This model is best used in medical schools, hospitals, ENT doctor clinics for students and patients to learn and understand the anatomy of the Ear.



#KM-055 BOOK OF BRAIN

This BOOK OF BRAIN features a three dimensional human brain model with 5 pieces of overlay. Each overlay illustrates a different aspect of SCHIZOPHRENIA, namely, Schizophrenia, Bipolar Disorder, Medicine, Weight Gain and Unwanted Effects. The overlays can be hanged in front of the brain to illustrate the pathways that are affected.

The model can be erected by means of a built-in rotatory post. Logo can be imprinted onto the cover/back of the book case. An information sheet (tailor-made for the client) of dimensions 135(W) x 205(H)mm on topics such as the causes and treatments of Schizophrenia can be laminated onto the inside of one of the covers. A drawer for the storage of either a CD or 3 pullout cards is provided at the bottom of the book case. Client can design his/her CD or printed card message for the introduction of this product.

The dimensions of the book case is 160(W) x 92(D) x 213(H)mm. The dimensions of the Brain model are 150(W) x 56(D) x 117(H)mm.

The BOOK OF BRAIN is best used in neurologist and doctor clinics, hospitals and medical schools for patients and medical students to understand the anatomy and physiology of the brain in relation to Schizophrenia.



#KM-058 BOOK OF HEART

This BOOK OF HEART features a dissection illustration of the human heart model into two portions. The upper portion can be detached from the lower portion for a detail inspection of the interior of the heart. Different portions of the heart such as atriums, ventricles, aorta, pulmonary artery/vein and superior vena cava can be clearly seen from this model.

Logo imprints can be done on the cover/back of the case. An information sheet (tailor-made for the client) on topics such as diseases/conditions of the heart and drugs used for such treatment can be laminated onto the inside of one of the covers. A drawer for the storage of either a CD or 3 pullout cards is provided at the bottom of the book case. The client can design his/her CD or printed card message for the introduction of this product.

The dimensions of the book case are 160(W) x 92(D) x 213(H)mm. The dimensions of the heart model are 70(L) x 89(D) x 105(H)mm.

This BOOK OF HEART is best used in cardiologist and doctor clinics, hospitals and medical schools for patients and students to understand the anatomy and physiology of the heart.



NOTE: These are just a select range of models available. For more information please contact SALT Promotions – Ph 0800 233247.